

January 16 - 30, 2022

CHUUK/PALAU



Package includes: **Truk Lagoon Jan 16-23:** 7 Days/7 Nights/5 days of three tank boat dives, accommodations at Blue Lagoon Resort, airport transfers, tanks, weights and dive guide. **Palau Jan 23-30:** 8 Days/7 nights/5.5 days of diving aboard the Palau Aggressor II, transfers, up to 25 dives per trip, non-alcoholic and local alcoholic beverages, all meals and snacks except last night supper.

Package does not include: International/domestic airfare, non-local alcohol, gratuities, nitrox (\$105USD), marine park tax payable on boat (\$240USD), travel and dive insurance. Dive computers, dive medical/evacuation insurance are mandatory.

Cost: Diver — — — \$4819USD

Non-diver - \$3979USD

Single diver - \$7499USD



TROPICALADVENTURES

T R A V E L

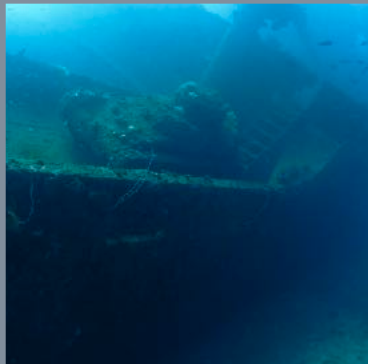
Tel: (780) 809-3636 Ext 1

Toll Free: 1-877-516-5525 Ext 1

www.tropicaladventurestravel.com

info@tropicaladventurestravel.com

EXPLORE



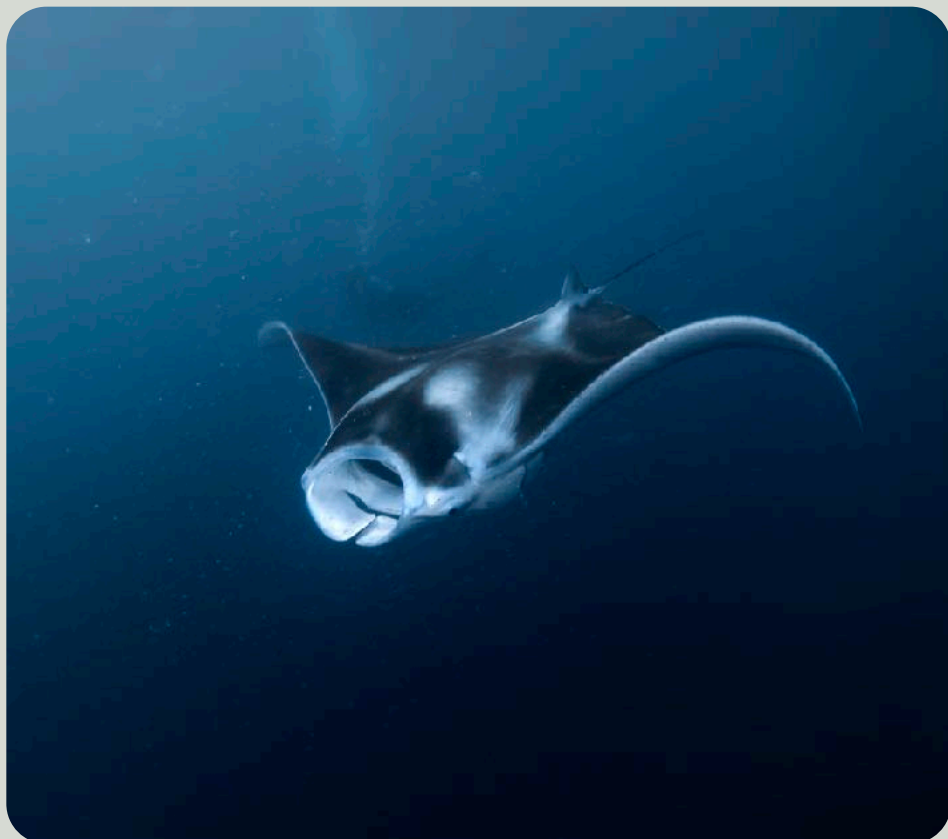
A Little about Chuuk:

In 1969, the famous French oceanographer Jacques Cousteau and his team explored Truk Lagoon. Following Cousteau's 1971 television documentary about the lagoon and its ghostly remains, the place became a scuba diving paradise, drawing wreck diving enthusiasts from around the world to see its numerous, virtually intact sunken ships. Scattered mainly around the Dublon, Eten, Fefan and Uman islands within the Truk group, a number of the shipwrecks lie in crystal clear waters less than fifteen meters below the surface. In waters devoid of normal ocean currents, divers can easily swim across decks littered with gas masks. In the massive ships' holds are row upon row of fighter aircraft, tanks, bulldozers, railroad cars, motorcycles, radios, plus thousands of other weapons, spare parts, and other artifacts. Of special interest is the wreck of the submarine I-169 Shinohara which was lost when diving to avoid the bombing. The sub had been part of the attack on Pearl Harbour.

The coral encrusted wrecks attract a diverse array of marine life, including manta-rays, turtles, sharks and corals. In 2007, 266

species of reef fish were recorded by an Earthwatch team and in 2006 the rare coral *Acropora pichoni* was identified.

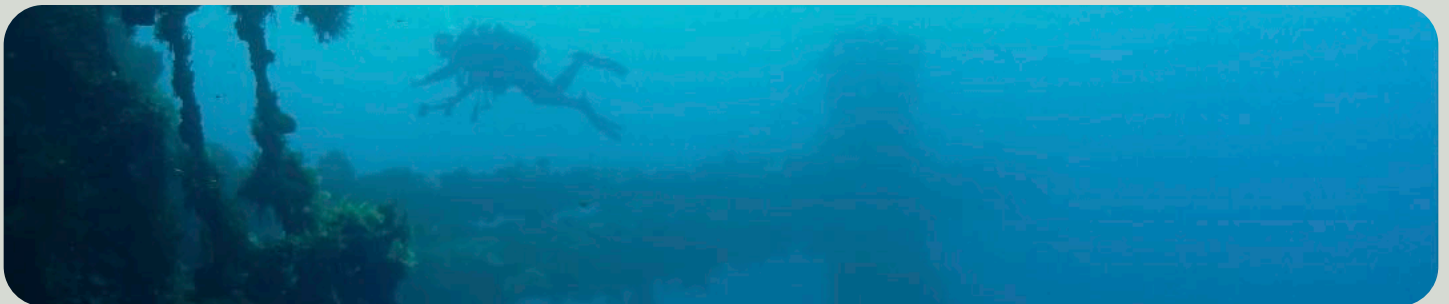
The reefs surrounding the islands of Yap are home to a rich diversity of tropical marine life. The most popular natural resource is the resident population of manta rays, which divers and snorkelers have a good chance of seeing on an almost daily basis. Usually found inside the lagoons, the dive guides in Yap are experts at finding the mantas, plus a host of other animals to keep visiting divers and snorkelers entertained. Yap also boasts lively colourful coral reefs and walls teeming with sharks, trevallies, nudibranchs and another favourite, mandarin fish



A LITTLE ABOUT PALAU:

Palau is a beautiful tropical paradise, and one of the true unspoiled destinations on the planet. Most of the 100-plus islands are small low-lying coral islands, ringed by barrier reefs. The exception is mountainous Babulthup, volcanic in origin.

The economy revolves around agriculture and fishing, but scuba diving in the pristine reefs is a popular tourism activity. Palau enjoys a tropical climate all year round with an annual mean temperature of 82 °F (28 °C). Rainfall can occur throughout the year, averaging a total of 150 inches (3,800 mm). The average humidity over the course of the year is 82%, and although rain falls more frequently between July and October, there is still much sunshine.



Deposit Requirements:

\$1500USD deposit required at the time of booking. Interim deposit of \$1500USD due April 14, 2021. Balance is due October 11, 2021.

All pricing based on double occupancy.

Cancellation Policy:

No refunds. Be sure to have cancellation insurance. Dive medical/evacuation insurance is mandatory.



6815 - 104 Street
Edmonton, Alberta
Toll Free: 1 800 565-2508
Edmonton: 780 438-1218
info@northwestscuba.com